



Quick Start Guide

Hardware Connections

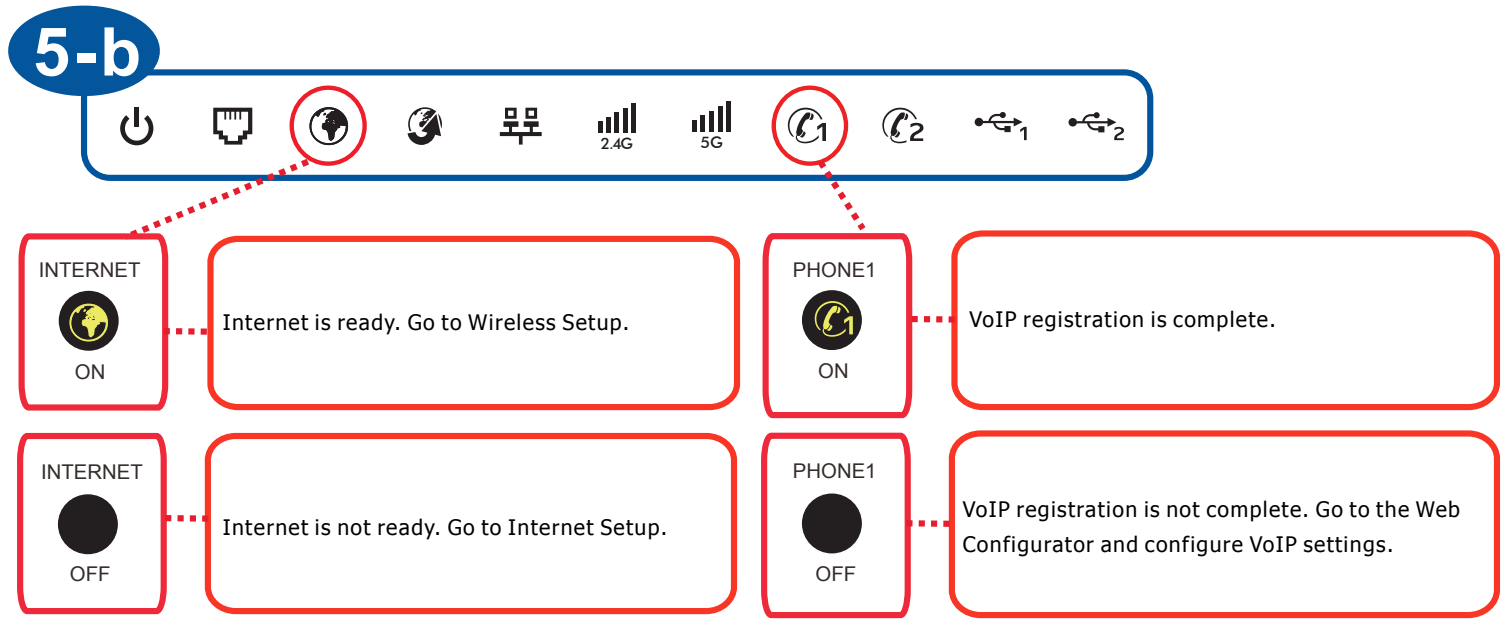
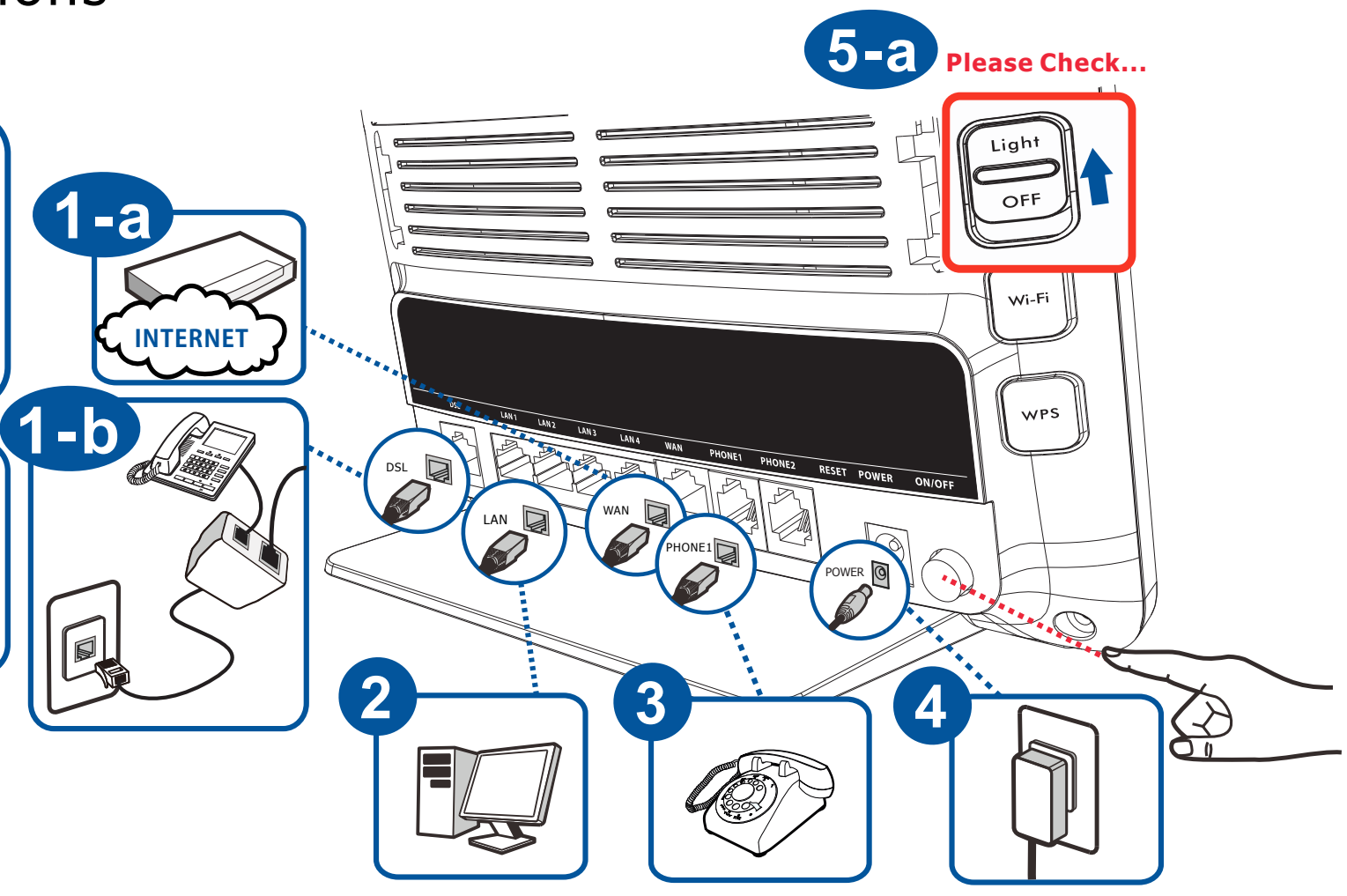
1 Connect gateway modem (1-a) using an Ethernet cable.
OR
Connect DSL splitter (1-b) using the gray telephone cable.

2 Connect computer using the yellow Ethernet cable.

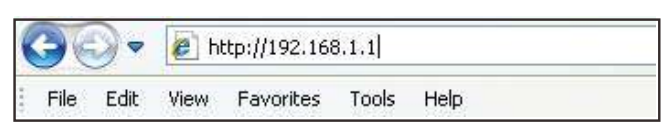
3 Connect phone.

4 Connect power and press the power button.

5 Make sure LEDs are on (5-a) and check LEDs (5-b).



Internet Setup



IP Address: 192.168.1.1



Username: admin
Password: 1234

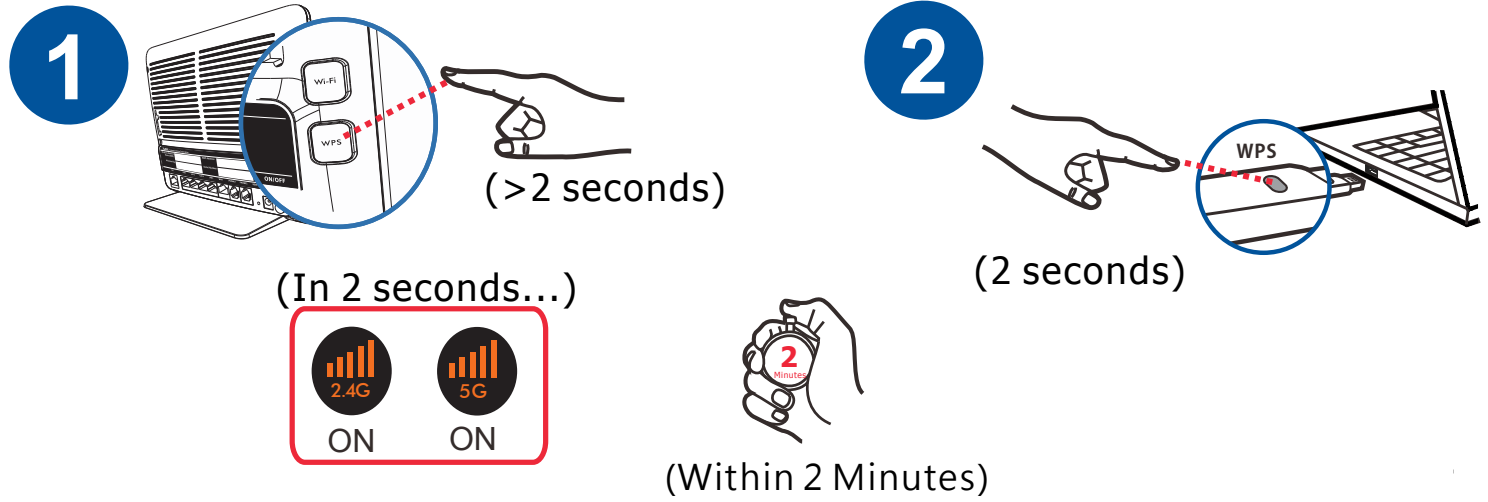
Quick Start



Wireless Setup

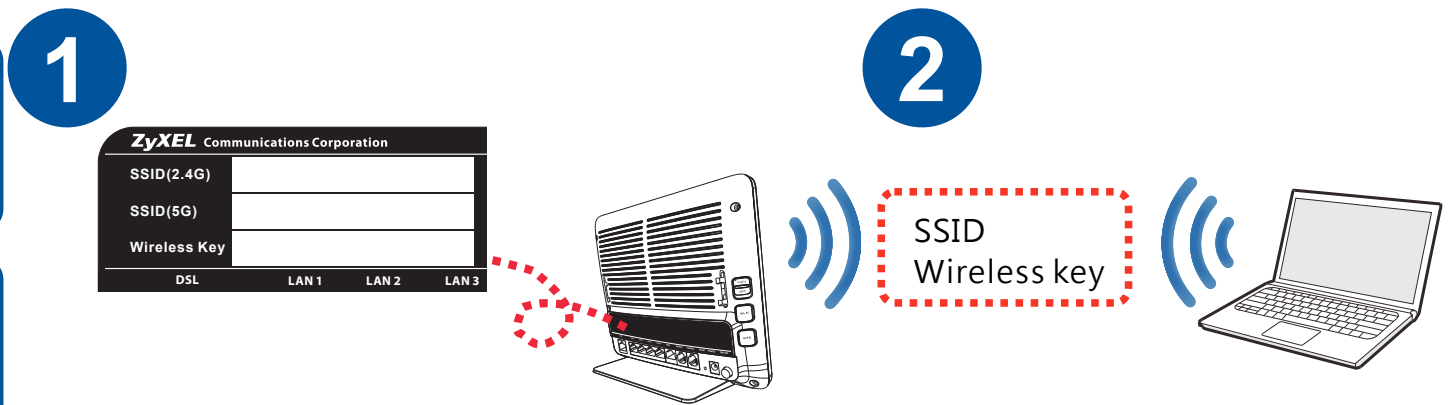
WPS

- 1 Press the WPS button until the WiFi 2.4G and 5G LEDs light up in orange.
- 2 Press the WPS button on the client.

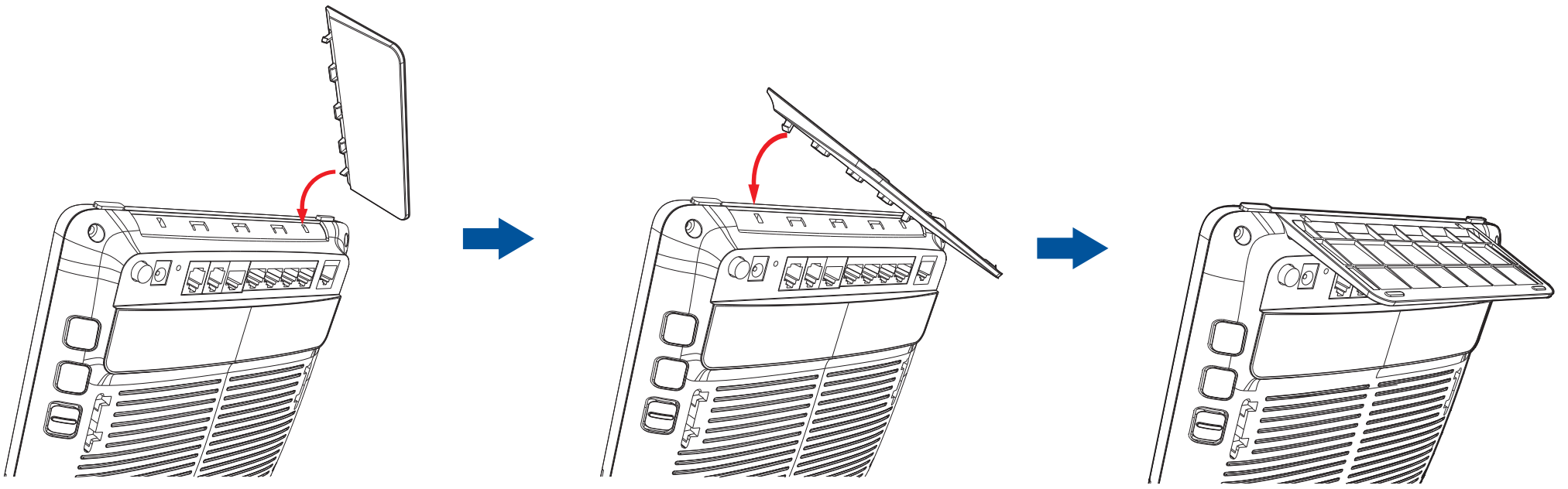


No WPS

- 1 The SSID and Wireless key are on the device sticker.
- 2 Find the device with this SSID. Enter Wireless key to connect.



Foot Stand Installation



Declarations



English	Deutsch (German)	Español (Spanish)	Français (French)
<p>Environmental product declaration</p> <p>RoHS Directive 2011/65/EU WEEE Directive 2012/19/EU PPW Directive 94/62/CE REACH REGULATION (CE) n° 1907/2006 ErP Directive 2009/125/EC</p> <p>Name/ titel: Raymond Huang / Quality & Customer Service Division Assistant VP Signature: Raymond Huang Date (dd/mm/yyyy): 01/10/2013</p> <p>RoHS VERIFIED</p>	<p>Produkt-Umweltdeklaration</p> <p>RoHS Richtlinie 2011/65/EU WEEE Richtlinie 2012/19/EU PPW Richtlinie 94/62/EG REACH VERORDNUNG (EG) Nr. 1907/2006 ErP Richtlinie 2009/125/EG</p> <p>Name/ titel: Raymond Huang / Quality & Customer Service Division Assistant VP Unterschrift: Raymond Huang Datum (dd/mm/jjjj): 01/10/2013</p> <p>RoHS VERIFIED</p>	<p>Declaraciones Ambientales de Producto</p> <p>RoHS Directiva 2011/65/UE WEEE Directiva 2012/19/UE PPW Directiva 94/62/CE REACH REGLAMENTO (CE) n° 1907/2006 ErP Directiva 2009/125/CE</p> <p>Nombre/ título: Raymond Huang / Quality & Customer Service Division Assistant VP Firma: Raymond Huang Fecha (aaaa/mm/dd): 2013/10/01</p> <p>RoHS VERIFIED</p>	<p>Profil environnemental de produit</p> <p>RoHS Directive 2011/65/EU WEEE Directive 2012/19/EU PPW Directive 94/62/CE REACH REGLEMENT (CE) N° 1907/2006 ErP Directive 2009/125/CE</p> <p>Non/ titre: Raymond Huang / Quality & Customer Service Division Assistant VP Signature: Raymond Huang Date (aaaa/mm/jj): 2013/10/01</p> <p>RoHS VERIFIED</p>
<p>Dichiarazione ambientale di prodotto</p> <p>RoHS Direttiva 2011/65/UE WEEE Direttiva 2012/19/UE PPW Direttiva 94/62/CE REACH REGOLAMENTO (CE) n. 1907/2006 ErP Direttiva 2009/125/CE</p> <p>Nome/ titolo: Raymond Huang / Quality & Customer Service Division Assistant VP Firma: Raymond Huang Data (aaaa/mm/gg): 2013/10/01</p> <p>RoHS VERIFIED</p>	<p>Milieuproductverklaring</p> <p>RoHS Richtlijn 2011/65/EU WEEE Richtlijn 2012/19/EU PPW Richtlijn 94/62/EG REACH Verordening (EG) nr. 1907/2006 ErP Richtlijn 2009/125/EG</p> <p>Naam/ titel: Raymond Huang / Quality & Customer Service Division Assistant VP Handtekening: Raymond Huang Datum (ddmm/jaar): 01/10/2013</p> <p>RoHS VERIFIED</p>	<p>Miljöproduktdeklaration</p> <p>RoHS Direktiv 2011/65/EU WEEE Direktiv 2012/19/UE PPW Direktiv 94/62/EG REACH Förordning (EG) nr 1907/2006 ErP Direktiv 2009/125/EG</p> <p>Namn/ titel: Raymond Huang / Quality & Customer Service Division Assistant VP Namnteckning: Raymond Huang Datum (ddmm/åååå): 01/10/2013</p> <p>RoHS VERIFIED</p>	<p>Standardin perustava ympäristötuoteseloste</p> <p>RoHS Direktiivi 2011/65/EU WEEE Direktiivi 2012/19/EU PPW Direktiivi 94/62/EY REACH ASETUS (EY) N:o 1907/2006 ErP Direktiivi 2009/125/EY</p> <p>Nimi/ otsikko: Raymond Huang / Quality & Customer Service Division Assistant VP Allekirjoitus: Raymond Huang Päivämäärä (pp/kk/vvvv): 01/10/2013</p> <p>RoHS VERIFIED</p>

EU Importer: ZyXEL Communications A/S | Generatorvej 8D, 2730 Herlev | <http://www.zyxel.dk>
US Importer: ZyXEL Communications, Inc | 1130 North Miller Street Anaheim, CA 92806-2001 | <http://www.us.zyxel.com>

See the User's Guide on the CD or at www.zyxel.com for more information.